



350-030

TestKing's CCIE® Voice Written

Version 10.0

www.testking.com

Leading The Way
in IT Testing And Certification Tools

www.testking.com

Important Note, Please Read Carefully

Study Tips

This product will provide you questions and answers along with detailed explanations carefully compiled and written by our experts. Try to understand the concepts behind the questions instead of cramming the questions. Go through the entire document at least twice so that you make sure that you are not missing anything.

Further Material

For this test TestKing plans to provide:

* Online Testing. Practice the questions in an exam environment.

Try a demo: <http://www.testking.com/index.cfm?pageid=724>

Latest Version

We are constantly reviewing our products. New material is added and old material is revised. Free updates are available for 90 days after the purchase. You should check your member zone at TestKing an update 3-4 days before the scheduled exam date.

Here is the procedure to get the latest version:

1. Go to www.testking.com
2. Click on **Member zone/Log in**
3. The latest versions of all purchased products are downloadable from here. Just click the links.

For most updates, it is enough just to print the new questions at the end of the new version, not the whole document.

Feedback

Feedback on specific questions should be send to feedback@testking.com. You should state: Exam number and version, question number, and login ID.

Our experts will answer your mail promptly.

Explanations

Currently this product does not include explanations. If you are interested in providing TestKing with explanations contact feedback@testking.com. Include the following information: exam, your background regarding this exam in particular, and what you consider a reasonable compensation for the work.

Copyright

Each pdf file contains a unique serial number associated with your particular name and contact information for security purposes. So if we find out that a particular pdf file is being distributed by you, TestKing reserves the right to take legal action against you according to the International Copyright Laws.

QUESTION NO: 1

You are a network technician at TestKing. Your newly appointed TestKing trainee asks you what three elements make up the MQC.

What will your reply be?

- A. Class-map, Policy-map and Service-policy statement
- B. DSP, Codec and Sampling Rate
- C. Mean Opinion Scores, representative sampling, Standard Deviation
- D. Gatekeeper, H 323 Proxy and RSVP
- E. Firewall, Router, Bios

Answer: A

QUESTION NO: 2

What is the default fax relay connection rate?

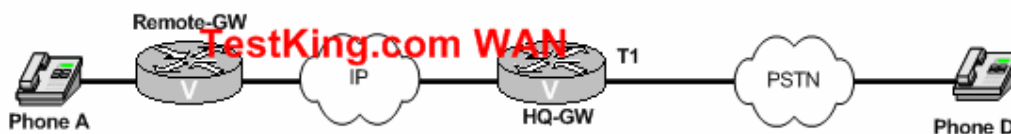
- A. 14400 bps
- B. 7200 bps
- C. 9600 bps
- D. 28800 bps
- E. 11000 bps

Answer: B

14400 for G711, 7200 for G729. G729 is default codec

QUESTION NO: 3

You are the network administrator at TestKing. The TestKing WAN is shown in the following exhibit:



The remote TestKing user at Analog Phone A tries to make a call to Analog Phone D. The call is rejected. You troubleshoot the problem and discover that the ISDN Plan and Type that the PSTN was receiving was not setup correctly. The PSTN was expecting the following:

Leading the way in IT testing and certification tools, www.testking.com

Plan: Unknown
Type: Unknown

While the PSTN was receiving the following:

Plan: ISDN
Type: Unknown

Which methods will resolve this problem?

- A. Use the **isdn map** command on the POST dialpeer on Remote-GW.
- B. Use the **isdn map** command on the VOIP dialpeer on HQ-GW.
- C. Use the **isdn map** command on the POTS dialpeer on HQ-GW.
- D. Implement an outgoing translation rule on the VOIP dialpeer on HQ-GW.
- E. Use the **isdn map** command on the VOIP dialpeer on Remote-GW.

Answer: E

Explanation:

The **isdn map** command is used to override the default ISDN type and plan generated by the router which has custom values. To undo the changes you made with the **isdn map** command use the following command:

```
isdn map {address address | regexp | plan plan | type type}
no isdn map {address address | regexp | plan plan | type type}
```

Syntax Description

address address	Address map, which can be to the calling, called, or redirecting number.
<i>regexp</i>	Regular expression for pattern matching.
plan plan	ISDN numbering plan.
type type	ISDN number type.

QUESTION NO: 4

You are contracted as a network administrator for a small company, TestKing Inc.

Your newly appointed TestKing trainee wants to know

What settings have to be in place in order to pass hook-flash on h.323 from FXS to FXO:

What will your reply be?

- A. **connection plar** must be configured on the voice-port (FXS)
- B. **connection trunk** must be configured on the voice-port (FXS) and (FXO)
- C. **connection plar** must be configured on the voice-port (FXS)
- D. **connection trunk** must be configured on the voice-port (FXS) and (FXO)
- E. **connection plar** must be configured on the voice-port (FXS) and (FXO)

Leading the way in IT testing and certification tools, www.testking.com

Answer: E

IP TELEPHONY / VOIP, Configuring Hookflash Relay on FXS/FXO Voice Ports The Following link will provide you with information on IP TELEPHONY / VOIP, Configuring hookflash Realay onFXS/FXO Voice Ports

http://www.cisco.com/en/US/tech/tk652/tk701/technologies_configuration_example09186a008009431b.shtml

QUESTION NO: 5

You are contracted as a network administrator for a small company, TestKing Inc.

Your newly appointed TestKing trainee wants to know

What combination will give him the best video quality using a 128kbs video conference call?

What will your reply be?

- A. H.263 video and G.728 audio
- B. H.261 video and G.728 audio
- C. H.263 video and G.711 audio
- D. H.261 video and G.711 audio
- E. H.263 video and G.722 audio

Answer: A

QUESTION NO: 6

You are a network administrator at TestKing. Your newly appointed TestKing trainee wants to know how many different types of devices can register with a Cisco CallManager.

What will your reply be?

- A. The number of calls a device handles in the busy hour.
- B. All of the above.
- C. The total number of each device type.
- D. Memory and CPU resources each device type requires from the server.
- E. Pagefile and CPU usage.

Answer: D

CIPT Solution Reference Network Design 6-3

Leading the way in IT testing and certification tools, www.testking.com

QUESTION NO: 7

You are a network administrator at TestKing and your newly appointed TestKing trainee wants to know from you what is considered to be a node on a H.323 network?

What will your reply be?

- A. Proxy.
- B. None of available options.
- C. Gateway.
- D. Options A, C.
- E. Gatekeeper.
- F. All of the above.

Answer: F

QUESTION NO: 8

You are a network administrator at TestKing, Inc. TestKing runs a centralized Automatic Message Accounting (CAMA) trunk that allows enterprise voice GW connectivity to the North American (911) services of the PSTN. A newly appointed TestKing trainee wants to know what the difference between CAMA trunk signalling and FXO trunk signalling are.

What will your reply be?

- A. They do not differ in basic signaling, but CAMA is used exclusively for 911 calls, while FXO is used for general PSTN calls.
- B. FXO allows for dialed digit delivery, while CAMA does not.
- C. CAMA provides for dialed digit delivery, while FXO does not.
- D. CAMA provides for ANI digit delivery, while FXO does not.
- E. CAM supports only loopstart, while FXO supports ground- and loopstart.

Answer: A

CIPT Solution Reference Network Design 6-3

QUESTION NO: 9

Leading the way in IT testing and certification tools, www.testking.com

You are a network administrator at TestKing. Your newly appointed TestKing trainee wants to know how a H.323 proxy Gatekeeper Request (GRQ) Registration, Admission, and Status (RAS) message is sent and by which endpoints.

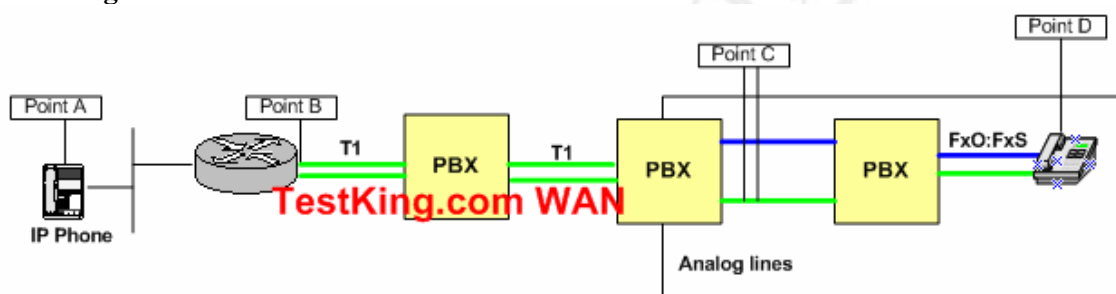
What will you tell your trainee? (Choose all that apply.)

- A. Gateway.
- B. H.323 Terminal.
- C. Proxy.
- D. Gateway.
- E. Firewall.

Answer: A, B, C

QUESTION NO: 10

You are a network administrator at TestKing. The TestKing network is shown in the following exhibit:



With reference to the exhibit, what section of the voice path represents the Tail Circuit?

- A. Between Point A and Point B.
- B. Between Point B and Point C.
- C. Between Point B and Point D.
- D. Between Point C and Point D.

Answer: C

Reference:

1. Cisco IP troubleshooting P416
2. http://www.cisco.com/en/US/tech/tk652/tk698/technologies_tech_note09186a0080149a1f.shtml

QUESTION NO: 11

You are a network administrator at TestKing. TestKing has recently joined a ISP that offers debit card calling from the US to other locations around the world where they

Leading the way in IT testing and certification tools, www.testking.com

only have FXO connectivity to the PSTN. The TestKing network is shown in the following exhibit:



It is crucial to the ISP to ensure that their consumers are not charged for the call unless the call successfully reached the called party in the PSTN.

Which of the following design requirements will achieve the ISP's desired results?

- A. Use Voice Activity Detection (VAD) to determine whether or not a person answered the call.
- B. Use CDR records to determine which calls resulted in "ring no answer" and which calls were answered.
- C. Configure call progress tone detection on the FXO interface to indicate disconnect supervision.
- D. Avoid use of FXO for this application.
- E. Configure call progress tone detection on the FXO interface to indicate answer supervision.

Answer: E

QUESTION NO: 12

You are a network administrator at TestKing. Your newly appointed TestKing trainee wants to know what is NOT a primary cause of echo in a voice network.

What will your reply be?

- A. Delay in the IP Network.
- B. Acoustical Reflections.
- C. 4 wire to 2 wire Hybrids.
- D. Packet Loss in the IP Network.
- E. All of the above.

Answer: D

QUESTION NO: 13

You are a network administrator at TestKing. You have been instructed to select the correct SMDI packet from the options below:

Select the correct SMDI packet:

Leading the way in IT testing and certification tools, www.testking.com

- A. MVI010001N0002222 000112324
- B. MD0010001A0002222 000112324
- C. MC0010001D0002222 00012324
- D. ND0010001A0002222 00012324
- E. RD0010001B000222 00012324

Answer: B

CISCO CALLMANAGER, Troubleshooting Legacy Voice Mail Integration with Cisco CallManager 3.0 and 3.1

http://www.cisco.com/en/US/products/sw/voicesw/ps556/products_tech_note09186a00800a8956.shtml

QUESTION NO: 14

You are the network administrator at TestKing. The TestKing network is shown in the following exhibit:



The PBX does not receive the initial few digits from the IP side of the 2611 network. What should you do?

- A. Configure prefix delay, in the dail-peer POTS to add the delay.
- B. Configure interdigit timing 1 under the voice-port.
- C. Configure prefix, in the dail-peer POTS to forward the necessary digits.
- D. Configure **delay-dail** under the voice-port to add the delay.

Answer: D

TELEPHONY SIGNALING, Understanding and Troubleshooting Analog E&M Start Dial Supervision Signaling

http://www.cisco.com/en/US/tech/tk652/tk653/technologies_tech_note09186a0080093f61.shtml

QUESTION NO: 15

You are a network administrator at TestKing. You want to troubleshoot a FailSafe problem in Unity. Where should you look for detailed error messages?

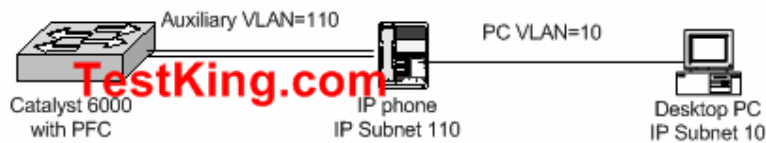
Leading the way in IT testing and certification tools, www.testking.com

- A. In the Application.Log.
- B. On the Status Monitor.
- C. In the Tempu.log.
- D. In the SDL Trace.
- E. In the System.log.

Answer: A

QUESTION NO: 16

You are a network engineer at TestKing. The TestKing network is shown in the following exhibit:



You have just configured the Catalyst 6000 with the following commands:

```
set qos enable
set port qos 5/1-48 vlan-based
set port qos 5/1-48 trust-ext untrusted
set port qos 5/1-48 trust trust-cos
```

We assume that the IP Phone is connected to port 5/1, which of the following statements are true?

- A. The IP Phone will re-write the CoS of 802.1p/Q-tagged packets from the PC to CoS=0.
- B. The IP phone will not modify the DSCP of packets from the PC.
- C. The Catalyst 6000 will not modify the CoS of any packets received on port 5/1.
- D. The Catalyst 6000 switch port 5/1 will re-write the CoS of all packets received on VLAN 110 with CoS=5.
- E. The Catalyst 6000 switch port 5/1 will re-write all packets with a Cos=0.

Answer: A, B, C

set port qos trust

http://www.cisco.com/univercd/cc/td/doc/product/lan/cat6000/sw_7_2/cmd_ref/set_po_r.htm#39814

QUESTION NO: 17

Leading the way in IT testing and certification tools, www.testking.com

You are a network engineer for TestKing, Inc. Your newly appointed TestKing trainee asked you about the perspective of the CallManager. In particular, she wants to know which device the Unity TSP looks and behaves mostly like.

What will your reply be?

- A. A TAPI Device
- B. A MGCP Gateway
- C. A Cisco IP Phone
- D. A H.323 Gateway
- E. A CTI Port

Answer: A

QUESTION NO: 18

Which of the following statements is an attribute of ISDN Non-Facility Associated Signaling (NFAS)?

- A. Enables the D-channel to transmit “data” information unrelated to any voice call, such as inter-switch status updates.
- B. Applicable to voice calls and PRI only, but not data PRI calls.
- C. Is available on both T1 and E1 PRIs.
- D. Single D-channel controls B-channels on the same T1 span, as well on other T1-spans.
- E. Single T1 span can be split into two “trunk groups”, each with its own dedicated D-channel.

Answer: D

Voice Enabling the Data Network; Durkin: Cisco Press p124

QUESTION NO: 19

You are a network administrator at TestKing. Your newly appointed TestKing trainee wants to know what type of signaling provides Dialed Number Information Service (DNIS) on a T1/E1.

What will your reply be?

- A. E&M
- B. Ground start
- C. Loop Start
- D. All of the above

Answer: D

TELEPHONY SIGNALING, Understanding How Digital T1 CAS (Robbed Bit Signaling) Works in IOS Gateways

http://www.cisco.com/en/US/tech/tk652/tk653/technologies_tech_note09186a00800e2560.shtml

QUESTION NO: 20

Which of the following is the best configuration for provisioning for VoIP at the WAN Edge?

- A. !
version 12.2
!
class-map match-all VOICE
 match ip rtp 16384 32767
class-map match-all VOICE-CONTROL
 match protocol skinny
!
policy-map WAN-EDGE
 class VOICE
 low-latency queuing 33 percent
 class class-default
 weighted-fair-queue
 !
 !
- B. !
version 12.2
!
class-map match-all VOICE
 match ip rtp 16384 32767
class-map match-all VOICE-CONTROL
 match protocol skinny
!
policy-map WAN-EDGE
 class VOICE
 low-latency queuing 33 percent
 class class-default
 weighted-fair-queue
 !
 !
- C. !
version 12.2
!
class-map match-all VOICE
 match ip dscp 45
class-map match-all VOICE-CONTROL
 match ip dcsp 26
!
policy-map WAN-EDGE
 class VOICE
 priority queue 33 percent

Leading the way in IT testing and certification tools, www.testking.com

```

class VOICE-CONTROL
  bandwidth queue 2 percent
class class-default
  fair-queue
!
D. !
version 12.2
!
class-map match-all VOICE
  match ip dscp 5
class-map match-all VOICE-CONTROL
  match ip dscp 3
!
policy-map WAN-EDGE
  class VOICE
    priority percent 33
  class VOICE-CONTROL
    bandwidth percent 2
  class class-default
    fair-queue
!

```

Answer: A

QUESTION NO: 21

You are a network administrator at TestKing. Your newly appointed TestKing trainee wants to know what protocol IP Phone uses to learn the Voice VLAN ID it should use for Voice traffic.

What will your reply be?

- A. Skinny Station Protocol
- B. 802.1q
- C. LLQ
- D. VTP
- E. CDP

Answer: E

QUESTION NO: 22

You are a network administrator at TestKing. Your newly appointed TestKing trainee wants to know how much Layer 3 is required for Call Control on an IP Phone on average.

What will your reply be?

- A. 2 kbps
- B. 8 bps
- C. 16 kbps
- D. 120 bps
- E. 150 kbps

Answer: E

CIPT Solution Reference Network Design 2-5

QUESTION NO: 23

Migrating from TDM voice requirements to VoIP usually does not cause migration issues for customers who expect to be:

- A. Deploying in a Green-Field scenario.
- B. Fully IP in 1 to 3 years.
- C. Fully IP within 12 months.
- D. All of the above.

Answer: A

QUESTION NO: 24

You are the technician at TestKing. Your newly appointed TestKing trainee wants to know what could cause a user to hear echoes of her own voice.

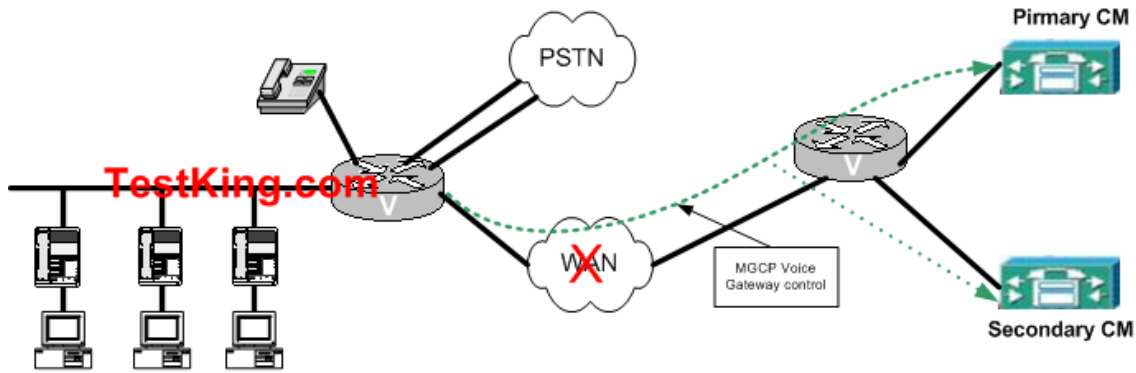
What will your reply be? (Choose all that apply.)

- A. Mismatch in impedance in the hybrid transformer.
- B. Gain in local loop.
- C. ERL is low at the trail circuit.
- D. A-3 db loss is taking place in local loop.

Answer: A, B, C

QUESTION NO: 25

You are the network administrator at TestKing. TestKing has a CM network deployed with MGCP to the branch office GWs. The TestKing network is shown in the following exhibit:



You want to protect the protect branch office telephony (IP phone to IP Phone, and IP Phone to PSTN) in the event of a WAN failure.

Which design methods could you implement? (Choose all that apply.)

- A. SRST
- B. MGCP gateway fallback
- C. CM clustering
- D. Primary and Secondary CMs
- E. CAC

Answer: A, B

QUESTION NO: 26

You are a network engineer at TestKing. TestKing has a voice gateway that is receiving calls from infinite sources (PSTN callers) during the busy hours when lost calls should be cleared (blocked).

What typical traffic model is required to dimension the number of gateway ports/trunks?

- A. Erlang-B
- B. B and C
- C. Erlang-C
- D. Poisson
- E. None of the above.

Answer: A

Answer is Extended Erlang B - Deploying Cisco Voice over IP Solutions; Davidson; Cisco Press p15

QUESTION NO: 27

Leading the way in IT testing and certification tools, www.testking.com

Your newly appointed TestKing trainee wants to know by you what CallManager uses a Calling Search Space for.

What will your reply be?

- A. To restrict calls to a particular range of numbers.
- B. To enable the use of E911 services.
- C. To enable the use of an overlapping dial plan.
- D. To provide access-list-like security.
- E. All of the above.

Answer: E

CIPT Solution Reference Network Design Chapter 7

QUESTION NO: 28

You are a network administrator at TestKing. You want to configure

an AS5300 to authenticate TestKing users for Authentication, Authorization, and Accounting (AAA) RADIUS server by prompting the user for a PIN number, etc. You want AS5300 to use application clid_authen_collect. TestKing users are currently dialing 9592000.

What configuration should you use?

- A. dial-peer voice 1 pots
destination-pattern 9592.....
port 0:D
application clid_authen_collect
- B. dial-peer voice 1 pots
destination-pattern 2.....
port 0:D
application clid_authen_collect
- C. dial-peer voice 1 pots
incoming called number 9592000
destination-pattern 2.....
port 0:D
application clid_authen_collect
- D. dial-peer voice 1 pots
incoming called-number 959....
destination-patern 2.....
port 0:D
application clid authen collect

Answer: D

Leading the way in IT testing and certification tools, www.testking.com

Cisco IOS Voice Commands, application

http://www.cisco.com/univercd/cc/td/doc/product/software/ios122/122newft/122tcr/122tvr/vrg_a1.htm#1492881

QUESTION NO: 29

Your newly appointed TestKing trainee wants to know what percent of a standard G.711 packet is taken by IP, UDP and RTP headers when cRTP is not used.

What will your reply be?

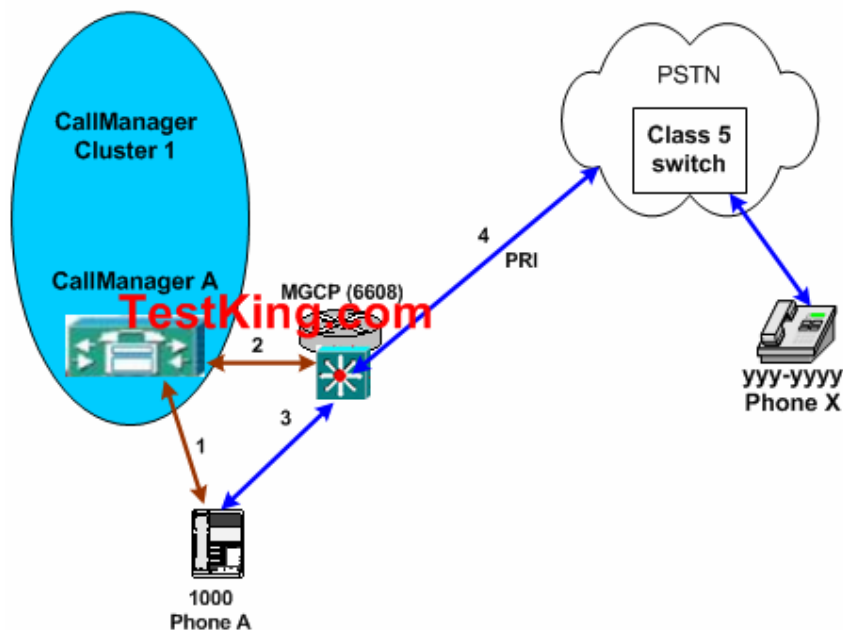
- A. 15%
- B. 20%
- C. 25%
- D. 33%
- E. 45%

Answer: B

G711 payload is 160 bytes and IP; UDP & RTP headers total 40 bytes

QUESTION NO: 30

You are the network administrator at TestKing. The TestKing Voice network is shown in the following exhibit:



The default gateway in the TestKing network is a 6608 blade that is running MGCP. Call Manager runs version 3.1. TestKing users will make calls from Phone A to Phone X. All IP streaming is G.711. Each of the logical links in the TestKing network carries different types of traffic.

On which link can Skinny (SCCP) traffic be seen?

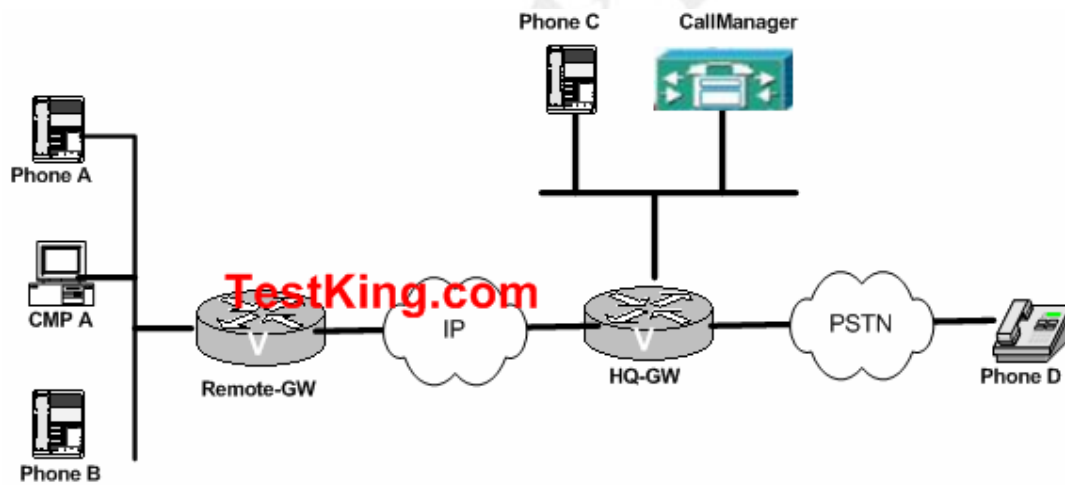
- A. 1 only
- B. 1 and 2
- C. 1, 3, and 4
- D. 2, and 3
- E. 2, 3, and 4

Answer: A

Skippy is only used between CCM and IP phone

QUESTION NO: 31

You are the network administrator at TestKing. The TestKing Voice network is shown in the following exhibit:



A TestKing user at Phone A complains about a persistent echo on calls to the PSTN. The ERL has been determined to be 15db. The configuration on the HQ-GW voice T1 is as follows:

```
voice-port 1/0:15
 echo-cancel coverage 8
end
```

What should be done resolve this problem?

- A. Increase the echo tail coverage
- B. Decrease the NLP threshold

Leading the way in IT testing and certification tools, www.testking.com

- C. Decrease the output gain
- D. Increase the input gain
- E. Increase the output gain

Answer: A

Cisco IOS Voice, Video, and Fax Commands, echo-cancel coverage

http://www.cisco.com/univercd/cc/td/doc/product/software/ios122/122newft/122tcr/122tvr/vrg_e1.htm#998290

QUESTION NO: 32

You are a network administrator at TestKing. Your newly appointed TestKing trainee wants to know what the following SMDI packet represents:

MD0010013D 0002215

What will your reply be?

- A. MWI OFF commands for extension 2215
- B. A “Call Forward No Answer” extension 2215 from extension 10013
- C. MWI ON command for extension 2215
- D. A “Forward All Calls”, extension 10013 calling 2215
- E. Extension 2215 calling into voicemail on port 13

Answer: E

Troubleshooting Legacy Voice Mail Integration with Cisco CallManager 3.0 and 3.1

http://www.cisco.com/en/US/products/sw/voicesw/ps556/products_tech_note09186a00800a8956.shtml

QUESTION NO: 33

You are a network engineer at TestKing, Inc. Your newly appointed TestKing trainee wants to know what SMDI message from CallManager CMI or VG248 allows a Voicemail system to provide a “Hearth-beat” function on a RS-232 serial link.

What will your reply be?

- A. MWI INV
- B. MWI BLK
- C. OP:MWI
- D. None of the above

Answer: C

Configuring CallManager 3.x for Integration to Voice Mail Systems via SMDI

Leading the way in IT testing and certification tools, www.testking.com

http://www.cisco.com/en/US/products/sw/voicesw/ps556/products_configuration_example09186a0080160b6f.shtml

QUESTION NO: 34

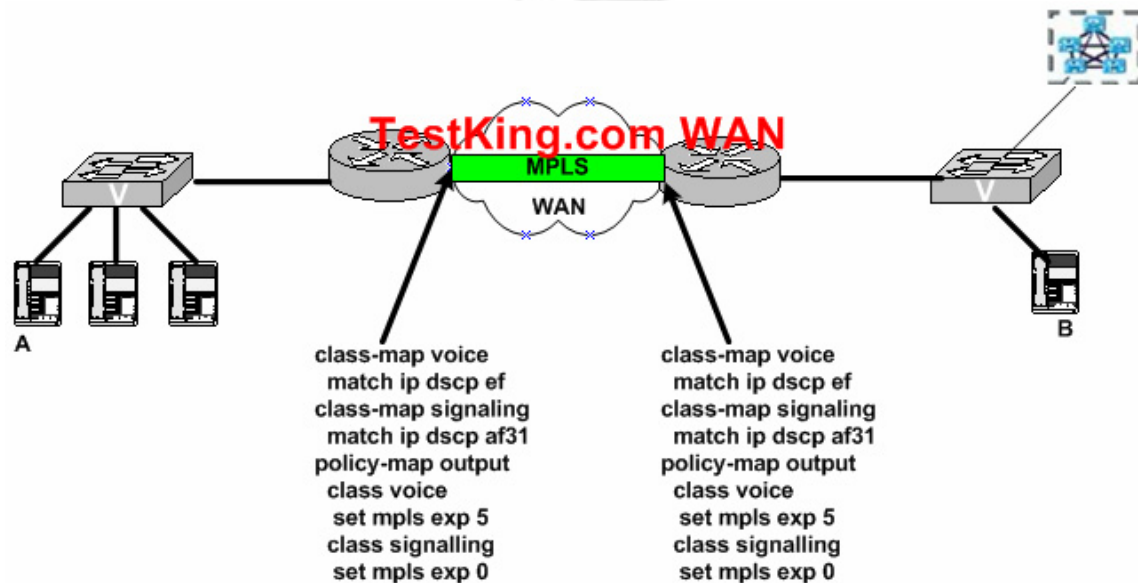
On which of the following does the maximum device weight capacity a Cisco MCS server depend? (Choose all that apply)

- A. The quantity and the type of phones configured on the Cisco MCS server.
- B. CCM software release version.
- C. The amount of memory, CPU and I/O throughput.
- D. The server model and type.

Answer: B, C, D

QUESTION NO: 35

You are the network administrator at TestKing. The TestKing network and the complete MPLS router QoS configuration is shown in the following exhibit:



The LAN switches (and any other equipment in the cloud) do not mark or remark the packets.

With regard to the QoS configuration in the exhibit, when IP Phone A calls IP Phone B, how will the voice and signalling packets be marked by the time they arrive at IP Phone B?

- A. Voice: IP Precedence 5; Signaling 3
- B. Voice: DSCP AF; Signaling: DSCP EF31

Leading the way in IT testing and certification tools, www.testking.com

- C. Voice: IP Precedence 5; Signaling: 0
- D. Voice: DSCP EF; Signaling: DSCP AF31
- E. Voice: DSCP EF; Signaling: 0

Answer: D

The DSCP field remains unchanged in the entire process

QUESTION NO: 36

What weighting are packets destined for the PQ given when PQ-WFQ is configured on an interface?

- A. 1024
- B. 56
- C. 12
- D. 0

Answer: D

<http://www.cisco.com/en/US/tech/tk652/tk698/topic1>

QUESTION NO: 37

You are a network administrator at TestKing. Your newly appointed TestKing trainee Wants to know what, according to Cisco's design guide, is the typical bandwidth needed for a single VoIP call (including layer 2) when using a g.729 codec, and no header compression.

What will your reply be?

- A. 64 Kbps
- B. 32 Kbps
- C. 16 Kbps
- D. 8 Kbps
- E. 4 Kbps

Answer: B

Actually for Ethernet it is 29.6kbps

QUESTION NO: 38

Leading the way in IT testing and certification tools, www.testking.com

You are the technician at TestKing. Your newly appointed TestKing trainee wants to know what command would enable CRTP.

What will your reply be?

- A. ip crtp compress
- B. ip rtp compress stac
- C. ip crtp compress stac
- D. ip rtp header-compression
- E. ip crtp header-compression

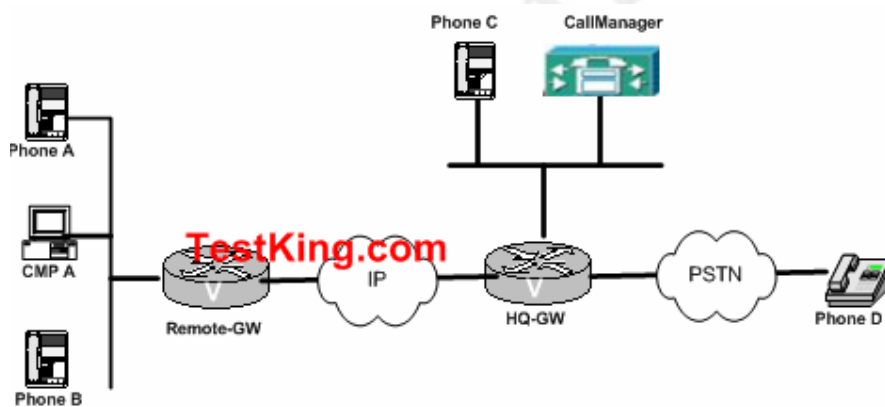
Answer: D

To enable Real-Time Transport Protocol (RTP) header compression, use the ip rtp header-compression command in interface configuration mode.

http://www.cisco.com/univercd/cc/td/doc/product/software/ios123/123tcr/123tqr/qos_i1gt.htm#1133081

QUESTION NO: 39

You are the network administrator at TestKing. The TestKing network is shown in the following exhibit:



A TestKing user at PhoneA has finished a call. He later that “CM Fallback Service Operating” is displayed on Phone A.

What is the possible cause of this?

- A. The TCP connection between CallManager and PhoneA has been disrupted.
- B. The FE on HQ-GW is out of service.
- C. The FXO port on Remote-GW is out of service.
- D. The FE and Remote-GW is out of service.
- E. Remote-GW has not received any messages from CallManager within the timeout period.

Answer: A, B

VOICE SOLUTIONS FOR BRANCH/SMALL OFFICE, Highly Available IP
Communications White Paper

http://www.cisco.com/en/US/netsol/ns340/ns394/ns346/ns383/net_value_proposition09186a00801c6097.html

QUESTION NO: 40

You are a network administrator at TestKing. The TestKing Voice network is configured as follows:

- **Phone A's device calling search space is CSS_Dev_A.**
- **Phone A's Line 1 is assigned calling search space CSS_Line_A**
- **Route Pattern 2XXX is placed in Partition Part_1.**
- **Route Pattern 20XX is placed in Partition Part_2.**
- **Route Pattern 200X is placed in Partition Part_3.**
- **CSS_Dev_A contains partition(s) Part_1.**
- **CSS_Line_A contains partition(s) Part_2.**

If a call is made to 2001 from Phone A, using Line1, what route pattern will be used by Call Manager?

- A. 200X in partition Part_3.
- B. 20XX in partition Part_2.
- C. 2XXX in partition Part_1.
- D. None of the above.

Answer: B

QUESTION NO: 41

What is the traffic model typically used when dimensioning call center agents receive calls from infinite sources (PSTN callers) where call are queued during the busy hour?

- A. Erlang-B
- B. Erlang-C
- C. Binomial
- D. Extended Erlang-B
- E. Engset

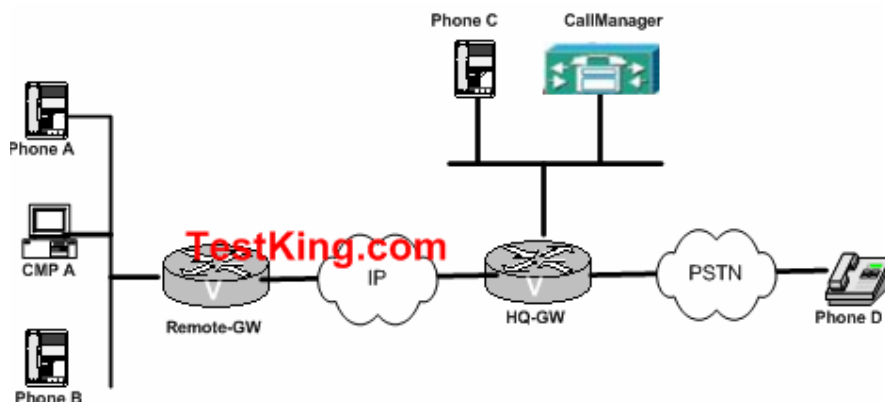
Answer: A

Leading the way in IT testing and certification tools, www.testking.com

Deploying Cisco Voice over IP Solutions; Davidson; Cisco Press p16

QUESTION NO: 42

You are the network administrator at TestKing. The TestKing Voice network is shown in the following exhibit:



Everything in the TestKing Voice network is under your control except for the PSTN. The TestKing user at IP Phone A complains of a persistent echo during all calls from IP Phone A to Analog Phone D.

What would be the best way to resolve this echo issue?

- A. Adjust the Echo Cancellation parameters on Phone D.
- B. Adjust the Echo Cancellation parameters on HQ-GW.
- C. Adjust the Echo Cancellation parameters on Phone A.
- D. Adjust the Echo Cancellation parameters on Remote-GW.
- E. Adjust the Echo Cancellation parameters on CallManager.

Answer: B

QUESTION NO: 43

When using a Cisco Inline-Power Patch-Panel, which pins are used to supply Inline-Power to the IP Phone?

- A. Pins 1, 2, 3, and 6
- B. Pins 1, 2, 5, and 6
- C. Pins 2, 4, 6, and 8
- D. Pins 3, 4, 7, and 8
- E. Pins 4, 5, 7, and 8

Answer: E

CISCO NETWORK MODULES, Catalyst Inline Power Patch Panel

Leading the way in IT testing and certification tools, www.testking.com

http://www.cisco.com/en/US/products/hw/modules/ps2797/products_data_sheet09186a00800a9ea3.html

QUESTION NO: 44

What is a DPA (Digital PBX Adapter) used for?

- A. To allow a customer to network VoiceMail systems and PBX together.
- B. To enable Calling-Name between CallManager and Meridian Mail systems.
- C. To connect an Octel 200/300/250/350 to CallManager.
- D. To connect CallManagerr to PBX.
- E. None of the above.

Answer: C

CISCO DPA 7600 SERIES GATEWAYS

<http://www.cisco.com/en/US/products/hw/gatecont/ps821/index.html>

QUESTION NO: 45

You are a network administrator at TestKing. Your newly appointed TestKing trainee wants to know what the proper configuration for VoIP authentication via Authentication, Authorization, and Accounting (AAA) is.

What will your reply be?

- A. aaa new-model
aaa authentication login voip radius
- B. aaa new-model
aaa authentication login h225 radius
- C. aaa new-model
aaa authentication h323 login radius
- D. aaa new-model
aaa authentication login default radius
- E. aaa new-model
aaa authentication login h323 radius

Answer: A

http://www.cisco.com/univercd/cc/td/doc/product/software/ios123/123cgcr/secur_r/sec_a1g.htm#18239

QUESTION NO: 46

When using an Inline_power enabled Catalyst Switch, which pins are used to supply Inline-Power to an IP Phone?

Leading the way in IT testing and certification tools, www.testking.com

- A. Pins 1, 2, 3, and 6
- B. Pins 1, 2, 5, and 6
- C. Pins 2, 4, 6, and 8
- D. Pins 3, 4, 7, and 8
- E. Pins 4, 5, 7, and 8

Answer: A

CISCO CATALYST 4000 SERIES SWITCHES, Cisco Catalyst 4000 Series Inline Power Solution

http://www.cisco.com/en/US/products/hw/switches/ps663/products_data_sheet09186a00800924d0.html

QUESTION NO: 47

You are a network administrator at TestKing. Your newly appointed TestKing trainee wants to know what protocol an IP Phone uses to learn the IP Address of its TFTP Server.

What will your reply be?

- A. CDP
- B. OSPF
- C. HSRP
- D. EIGRP
- E. DHCP

Answer: E

QUESTION NO: 48

What does CallManager use the concept of Location for?

- A. To define groups of devices based on physical location, in order to assign Primary and Backup CallManager servers.
- B. To group devices based on physical location, in order to delegate Administrative Control.
- C. To define the CODEDC to be used between two devices separated by a WAN link.
- D. To define the bandwidth that can be used between two devices.

Answer: D

CIPT Course v3.3 p3-98

QUESTION NO: 49

You are a network administrator at TestKing. Your newly appointed TestKing trainee wants to know why PRI is the preferred method for inter-connecting CallManager3.2 and below to PBX's.

What will your reply be? (Select two.)

- A. It allows a customer to share their exiting Meridian Mail system with CallManager subscribers whilst delivering full functionality.
- B. It provides Caller ID functionality.
- C. It is the most cost effective solution available.
- D. It offers the highest level of inter-operability between CallManager and PBX's.
- E. It allows a customer to share their exiting VoicewMail system with CallManager.

Answer: C, D

QUESTION NO: 50

You are a network administrator at TestKing. Your newly appointed TestKing trainee wants to know what SIP header a SIP Proxy is allowed to change.

What will your reply be?

- A. The To header.
- B. The Request-URI.
- C. The Contact header.
- D. The From header.

Answer: B

CISCO SIP PROXY SERVER, F Call-Flow Scenarios

http://www.cisco.com/en/US/products/sw/voicesw/ps2157/products_administration_guide_chapter09186a00801a1d94.html

QUESTION NO: 51

When is it possible for two Unity Servers to be placed in the same Dialing Domain? (Select two.)

- A. When they are attached to the same PBX.
- B. When they are both assigned the same location ID.
- C. When they do not have to dial trunk access codes to reach each other's subscribers.
- D. When their subscribers do not have overlapping extensions.
- E. When they are in the same Exchange Site/Routing Group.

Leading the way in IT testing and certification tools, www.testking.com

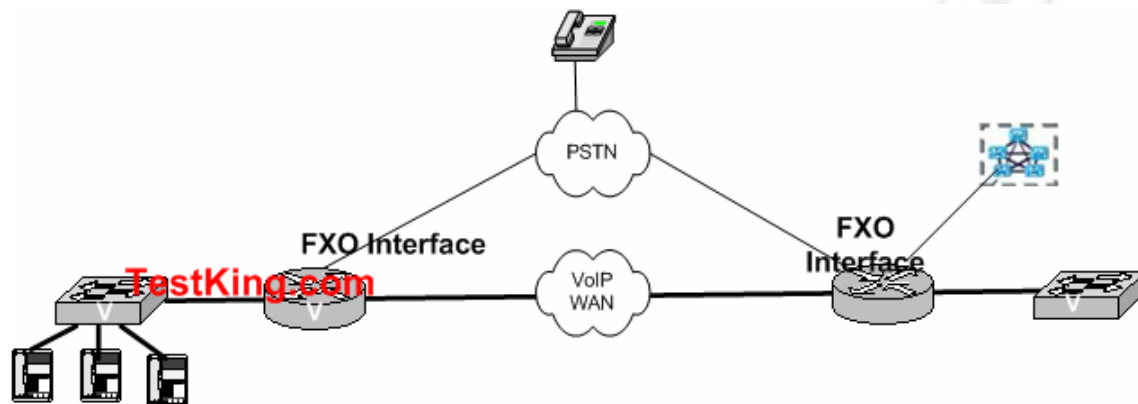
Answer: A, D

CISCO UNITY, Network Settings

http://www.cisco.com/en/US/products/sw/voicesw/ps2237/products_administration_guide_chapter09186a00801ba7bb.html

QUESTION NO: 52

You are the network administrator at TestKing. The TestKing network is shown in the following exhibit:



You want to implement Caller ID for calls from PSTN to the IP Phones. Analog trunks are equipped to the PSTN from both the GWs. The PSTN CO switch is capable of delivering Caller ID on the connection to the Cisco voice GW. The Cisco voice gateway is using a VIC-2FXO-M1 card.

What would be the correct voice GW design?

- A. None. Caller ID is not supported on analog FXO.
- B. GW connected via SCCP to the CallManager.
- C. GW must be a 2600/3600/3700 series platform.
- D. GW connected via MGCP to the CallManager.
- E. GW connected via H.323 to the CallManager.

Answer: E

QUESTION NO: 53

You are a network administrator at TestKing. Your newly appointed TestKing trainee wants to know which fields in the output from show active voice command indicates that packet loss is occurring.

What will your reply be? (Select one.)

Leading the way in IT testing and certification tools, www.testking.com

- A. The Receive delay field.
- B. The High Water playout delay field.
- C. The Low Water playout delay field.
- D. The Interarrival packet rate field.

Answer: A

VOICE QUALITY, Using the show call active voice Command to Troubleshoot Voice Quality Issues

http://www.cisco.com/en/US/tech/tk652/tk698/technologies_tech_note09186a008019ab88.shtml

QUESTION NO: 54

Your newly appointed TestKing trainee wants to know what type of signaling can provide automatic Number Identifications (ANI) on a T1/E1 line.

What will your reply be?

- A. E&M-fgd
- B. Loop Start
- C. PRI
- D. E&M-fgb

Answer: A

TELEPHONY SIGNALING, Understanding How Digital T1 CAS (Robbed Bit Signaling) Works in IOS Gateways

http://www.cisco.com/en/US/tech/tk652/tk653/technologies_tech_note09186a00800e2560.shtml

QUESTION NO: 55

You are a network administrator at TestKing. You are troubleshooting an IOS Voice Gateway. Which command will produce detailed information about the codec, ERL, tx/rx packets, and dial peers on the current active calls?

- A. The show voice port command.
- B. The show voice call command.
- C. The show voice call active command.
- D. The show call active voice command.

Answer: D

http://www.cisco.com/univercd/cc/td/doc/product/software/ios123/123tcr/123tvr/vrht_sh1.htm#34981

QUESTION NO: 56

You are a network administrator at TestKing. The new TestKing trainee wants to know what Inter-Cluster communications signalling includes in a CallManager cluster.

What will your reply be? (Select two.)

- A. Locations bandwidth and Shared media resources.
- B. Call detail records (CDR) database replication.
- C. Registration of devices Locations bandwidth Shared media resources.
- D. Device configuration replication.
- E. None of the above.

Answer: A, C

CIPT Course v3.3 p1-37

QUESTION NO: 57

Regardless of next-hop SIP device, what is the order in which CSPS will determine how to route the packet when you process a SIP message?

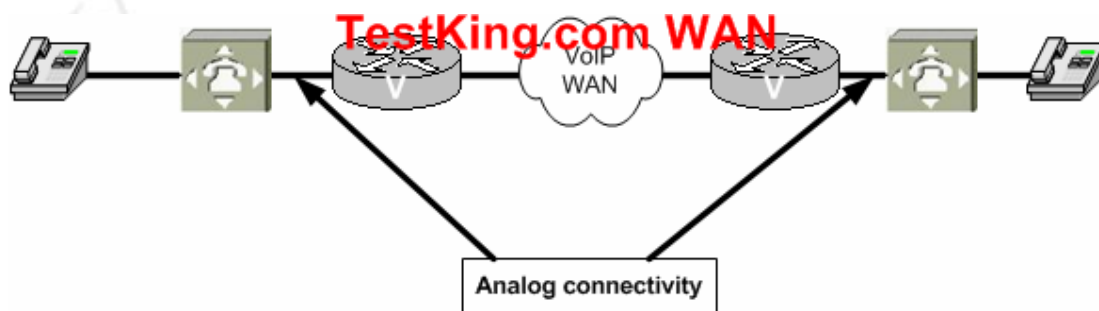
- A. Static Routes, GKTMP, Registry, LRQ to H.323 Gatekeeper
- B. Domain Routes, GKTMP, Registry, LRQ to H.323 Gatekeeper
- C. Static Routes, GKTMP, LRQ to H.323 Gatekeeper, Registry
- D. Registry, GKTMP, Static Route, LRQ to H.323 Gatekeeper

Answer: D

Cisco SIP Proxy Server Administration Guide p1-8

QUESTION NO: 58

You are the network administrator at TestKing. The TestKing network is shown in the following exhibit:



You want Caller ID be displayed for all phones connected to the PBXs, as well as for calls going in both directions across the IP network. The PBXs only have analog (FXS, FXO and E&M) capabilities to connect to the Cisco voice GWs.

What design will satisfy this requirement?

- A. All of FXS, FXO and E&M, provided that the FXO cards support Caller ID.
- B. 2-wire and 4-wire E&M.
- C. 4-wire E&M and FXO.
- D. FXS and E&M only.
- E. None of the above.

Answer: A

QUESTION NO: 59

What types of call processing functions do SRST preserve in a remote office in a CM network? (Choose all that apply.)

- A. IP Phone to VoiceMail transcoding services.
- B. IP Phone to conference DSP resources.
- C. IP Phone to GW calls.
- D. IP Phone to IP Phone calls.
- E. CTI applications such as IP SoftPhones.

Answer: A, C

CISCO CATALYST 4200 SERIES SWITCHES, Configuring Survivable Remote Site Telephony

http://www.cisco.com/en/US/products/hw/switches/ps669/products_configuration_guide_chapter09186a008007f1e1.html

QUESTION NO: 60

You are a network administrator at TestKing. Your newly appointed TestKing trainee wants to know what the term “MGCP backhaul” means.

What will your reply be?

- A. Transporting T1 CAS messaging to the MGCP Call Agent across IP.
- B. Transporting ISDN Q.931 messaging to the MGCP Call Agent across IP.
- C. Transporting ISDN Q.921 messaging to the MGCP Call Agent across IP.
- D. Transporting ISDN Q.931 messaging into MGCP events to the MGCP Call Agent.
- E. Encapsulating ISDN Q.931 CDR records to a RADIUS server.

Answer: B

Leading the way in IT testing and certification tools, www.testking.com

CISCO IOS SOFTWARE RELEASES 12.2 SPECIAL AND EARLY DEPLOYMENTS
MGCP-Controlled Backhaul of BRI Signaling in Conjunction with Cisco CallManager
http://www.cisco.com/en/US/products/sw/iosswrel/ps5012/products_feature_guide09186a00801a8bc4.html

QUESTION NO: 61

What factor determines the fragmentation size on a T1/E1 Frame Relay circuit?

- A. Line speed.
- B. Burst Count.
- C. The Average CIR.
- D. The minimum CIR.
- E. The maximum CIR.

Answer: D

VOFR, Frame Relay Fragmentation for Voice

http://www.cisco.com/en/US/tech/tk652/tk692/technologies_tech_note09186a00801142de.shtml

QUESTION NO: 62

TestKing has recently appointed a new trainee. The trainee wants to know what the target overall loss plan across a telephone network is.

What will your reply be?

- A. 12dBm – 24dBm.
- B. 8dBm – 16dBm.
- C. 4dBm – 12dBm.
- D. 0dBm – 8dBm.

Answer: D

QUESTION NO: 63

You are a network administrator at TestKing. Your newly appointed TestKing trainee wants to know what a gatekeeper is.

What will your reply be? (Choose all that apply.)

- A. A compulsory component in a H.323 system which provides call control services to the H.323 endpoints.
- B. An optional component in a H.323 system which provides call control services to the H.323 endpoints.
- C. A compulsory component in a SIP system which provides call control services to the H.323 and SIP endpoints.
- D. Logically separate from the endpoints, but its physical implementation may coexist with a terminal, multipoint conference unit (MCU), gateway, multipoint controller (MP), or other non-H.323 LAN device.
- E. An optional component in a SIP system which provides call control services to the H.323 and SIP endpoints.

Answer: B, D

QUESTION NO: 64

You are a telephony trainee at TestKing. The network administrator asks you what the advantage of Survivable Remote Site Telephony (SRST) design method is.

What will your reply be?

- A. It enhances the availability of CM distributed call processing.
- B. It enhances the availability of CM single site campus design.
- C. It enhances the availability of CM tool bypass.
- D. It enhances the availability of CM centralized call processing.

Answer: D

QUESTION NO: 65

You are a network administrator at TestKing. TestKing has a H.323 network. Which of the following functions is NOT performed by the Gatekeeper on the TestKing network?

- A. Call routing
- B. The Number to IP address translations
- C. Call authorization
- D. Call admission control
- E. Codec negotiation

Answer: E

QUESTION NO: 66

Leading the way in IT testing and certification tools, www.testking.com

You are a network administrator at TestKing. Your newly appointed TestKing trainee wants to know what the differences between Type of Service (ToS) and Class of Service (CoS) are.

What will your reply be? (Choose all that apply.)

- A. CoS allows a class based access to the media, but ToS prioritizes this access according to the precedence bit.
- B. CoS is a field in the IP header, but ToS is evaluated by the routing protocol.
- C. CoS allows a class based access to the media, but ToS prioritizes this access according to the precedence bit.
- D. CoS is a Layer 2 mechanism, but ToS is a Layer 3 mechanism.

Answer: A, D

QUESTION NO: 67

Which of the following Cisco Products can produce SMDI packets?

- A. A Cisco Unity.
- B. A Cisco CallManager.
- C. A Cisco VG200 Voice Gateway.
- D. A Cisco VG248 Analog Phone Gateway.
- E. All of the above.

Answer: A, B, D

QUESTION NO: 68

On what is busy hour traffic for voice gateway port/trunk is based upon in a call center deployment? (Choose all that apply.)

- A. Queue time.
- B. Agent talk time.
- C. Agent wrap up time.
- D. Agent after call work time.
- E. All of the above.

Answer: A, B

QUESTION NO: 69

TCP receives a request to open a voice channel on port 1720 in a VoIP network. There is no Fast Start. For what purpose will a new TCP port automatically be allocated for?

- A. H.225 call compression.
- B. H.323 call compression.
- C. G.726 call compression.
- D. H.225 call setup negotiation
- E. H.323 call setup negotiation.
- F. H.245 capability exchange negotiation

Answer: D

QUESTION NO: 70

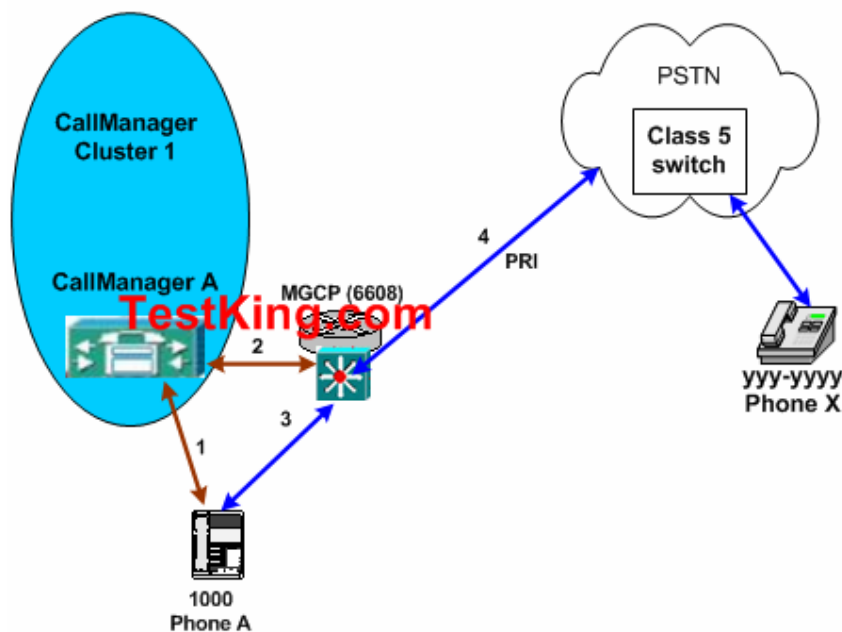
You are a network administrator at TestKing. You want to implement a standards-based protocol that will allow CallManager to seamlessly integrate with another vendor's traditional PBX system. What protocol should you implement?

- A. MGCP
- B. QSIG
- C. PRI NI-2
- D. SRST
- E. OSPF

Answer: D

QUESTION NO: 71

You are the network administrator at TestKing. The TestKing network is shown in the following exhibit:



The default gateway in the TestKing network is a 6608 blade that is running MGCP. Call Manager runs version 3.1. TestKing users will make calls from Phone A to Phone X. All IP streaming is G.711. Each of the logical links in the TestKing network carries different types of traffic.

On which link can q.921 traffic be sent?

- A. 1 only
- B. 2 and 3
- C. 2 and 4
- D. 3 and 4
- E. 4 only

Answer: E

QUESTION NO: 72

You are a network administrator at TestKing. An IP Phone named Phone A is configured with the extension 1500. Another IP Phone named Phone B is configured with the extension 1501. What is the minimum configuration that will allow the two IP Phones to contact each other?

- A. Both phones must be on the same trunk.
- B. Both phones must be assigned the same Calling Search Space.
- C. Both phones extensions must be in the same partition.
- D. None of the above.

Answer: C

QUESTION NO: 73

Test Technologies and King, Inc recently merged to form TestKing, Inc. You are appointed as the network administrator for TestKing, Inc. An IP Phone from Test Technologies, named Phone A has been assigned to Calling Search Space A. Calling Search Space A contains the following partitions in the order shown, listed with their respective Routing Patterns:

**Partition_A1, containing Route Pattern 1XXX
Partition_A2, containing Route Pattern 10XX**

Phone A dials “1001”. Which of the following statements is true?

- A. None of the route pattern is an exact match. Therefore, none will match and the caller will hear the re-order tone.
- B. Both patterns are equivalent matches. Therefore Call Manager will choose them the round robin fashion.
- C. Route Pattern 1XXX and 10XX both match, but since 1XXX is listed at the top it will be chosen first.
- D. Route Pattern 1XXX and 10XX both match, but since the 10XX is a better match it will be chosen.

Answer: D

http://www.cisco.com/en/US/products/sw/voicesw/ps556/products_administration_guide_chapter09186a00800c2ef1.html#10870

QUESTION NO: 74

You are a network administrator at TestKing. TestKing has a Cisco voice gateway that will be connected to a PBX/PSTN-switch via ISDN (PRI, QSIG, BRI). Which attributes of the PBX/PSTN-switch must you know to understand which features to configure on the voice GW in order to connect successfully to the PBX/PSTN-switch?

- A. Whether Q.921 or Q.931 is supported by the PBX/PSTN-switch.
- B. Whether H.225 or H.323 is supported by the PBX/PSTN-switch.
- C. Whether symmetric mode is supported by the PBX/PSTN-switch.
- D. What PRI/BRI switch-type is supported by the PBX/PSTN-switch.
- E. Whether the network or users side is supported by the PBX/PSTN-switch.

Answer: D, E

QUESTION NO: 75

What are the most important functions of H.245? (Choose all that apply.)

- A. It allows both sides of the call to perform IP address exchange and UDP port negotiations.
- B. It provides Coder/Decoder (CODEC) type negotiation such as G.711, between the calling and the called parties.
- C. It allows both sides of the call to perform IP port negotiation.
- D. It allows both sides of the call to perform H.255 port negotiation.

Answer: B, C

QUESTION NO: 76

Which of the following can AAA NOT be used for? (Choose all that apply.)

- A. Administration
- B. Authentication
- C. Architecture
- D. Admission
- E. Security

Answer: A, C

QUESTION NO: 77

You are a network administrator at TestKing. TestKing has a converged 512 Kbps MLP circuit. What set of commands will guarantee a maximum serialization delay of 15 ms on this circuit?

- A. ppp multilink fragment 960
- B. ppp multilink fragment 320
- C. ppp multilink fragment 640
ppp multilink interleave
- D. ppp multilink fragment-delay 15
ppp multilink interleave
- E. ppp multilink fragment-delay 15

Answer: D

To disable packet fragmentation, use the **ppp multilink fragment disable** command in interface configuration mode.

http://www.cisco.com/univercd/cc/td/doc/product/software/ios123/123cgcr/dial_r/dia_n1g.htm#1134762

Leading the way in IT testing and certification tools, www.testking.com

QUESTION NO: 78

What happens when configuration changes are made to the CCMAAdmin page of a Subscriber CallManager?

- A. The configuration changes are made locally in the SQL Database, and replicated in the publisher SQL Database.
- B. The configuration changes are made in the publisher SQL Database, and replication to subscribers.
- C. The configuration changes are made locally in the SQL Database, and replicated up to the publisher immediately.
- D. The configuration changes are made locally in the SQL Database, and replicated up to the publisher at the next scheduled replication.

Answer: B

QUESTION NO: 79

You are a network administrator at TestKing. Your newly appointed TestKing trainee wants to know what the difference is between a route-group and a route-list.

What will your reply be?

- A. Route-lists contain gateways for route-groups.
- B. Route-group contains a list of route-patterns.
- C. Route-lists contain a list of gateways.
- D. Route-groups contain route-lists which points to the gateways.
- E. Route-lists contain route-groups which point to the gateways.

Answer: E

CIPT Course v3.3 p3-22

QUESTION NO: 80

You are a network administrator at TestKing. TestKing has a Unity3.0/ and Exchange 2000 system. Which of the following attributes will be stored in Active Directory?

- A. Transfer Type (Supervised, Release to switch)
- B. Location ID
- C. Alternate Extensions
- D. Recorded Name
- E. All of the above

Answer: B, C, D

QUESTION NO: 81

What happens when you use the Low Latency Queuing feature of the Cisco IOS?

- A. All the data traffic is serviced by the PQ.
- B. All the RTP traffic is serviced by the PQ.
- C. All the RTP traffic is serviced by the CBWFQ.
- D. All the data traffic is serviced using the CBWFQ.
- E. None of the above.

Answer: B, D

QUESTION NO: 82

You are a network administrator at TestKing. You want to configure a T1 (1,536M) FR PVC for voice and data traffic. You do not expect voice to require more than half the bandwidth.

Which of the following would be the most sufficient FRTS configuration?

- A. map-class frame-relay FRST-voice
frame-relay cir 1536000
frame-relay bc 15360
frame-relay be 0
frame-relay mincir 1536000
- B. map-class frame-relay FRTS-voice
frame-relay cir 1536000
frame-relay bc 15360
frame-relay be 0
frame-relay mincir 768000

Answer: A

QUESTION NO: 83

You are the network administrator at TestKing. Your newly appointed TestKing trainee wants to know what MailStore options are supported in Unity version 2,4,6.

What will your reply be?

- A. MS Mail
- B. Domino

Leading the way in IT testing and certification tools, www.testking.com

- C. Exchange 2000
- D. Exchange 5.5
- E. None of the above

Answer: D

http://www.cisco.com/en/US/products/sw/voicesw/ps2237/prod_pre_installation_guide09186a00800ea54b.html#73967

QUESTION NO: 84

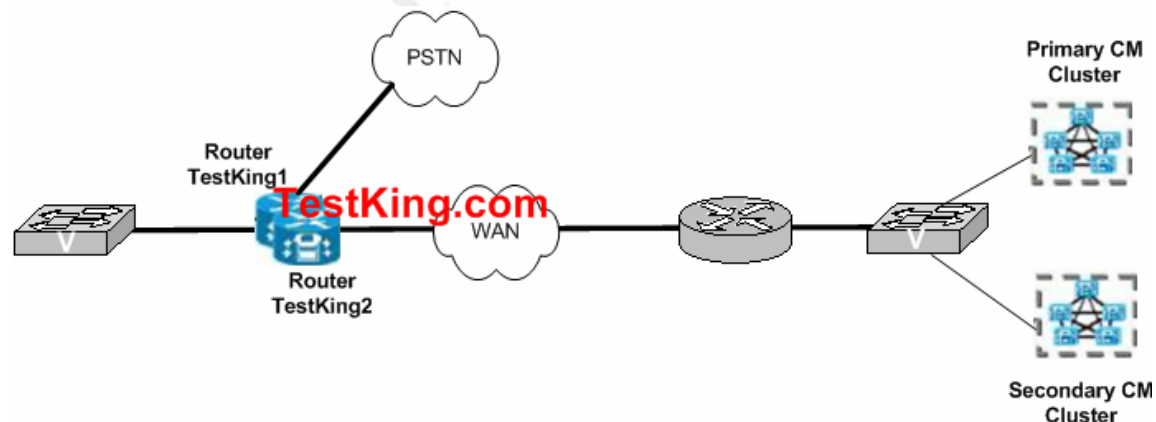
Where can the Gatekeeper be when Gateways are registering with a Gatekeeper?

- A. In a different subnet.
- B. On a remote LAN.
- C. On the same subnet.
- D. On the same LAN.
- E. Any of the options above.

Answer: E

QUESTION NO: 85

You are the network administrator at TestKing. TestKing uses HSRP in conjunction with SRST to preserve the telephony functionality in a branch office as shown in the following exhibit:



Should a WAN failure occur while the primary router, Router TestKing1 is in use, Router TestKing1 should switch to SRST mode to preserve telephony functions. However, if Router TestKing1 also fails, the HSRP backup router, Router TestKing2, must become the active router for the branch office and must take over SRST and routing functions for the branch office.

What type of physical connectivity must you duplicate on Routers TestKing1 and TestKing2 to ensure that Router TestKing2 will be effective in running SRST for the branch office?

- A. ISDN
- B. PSTN
- C. WAN
- D. CMs
- E. VLANs

Answer: B

QUESTION NO: 86

With regard to echo, which of the following statements is false?

- A. The term “ERL” refers to a measurement of the volume of Echo heard by the user.
- B. Increasing the Echo-Cancellation coverage in an Echo Canceller may also increase Echo Canceller convergence time.
- C. Analog components in the voice path causes echo.
- D. Echo exists in a Circuit Switched environment, but usually goes unnoticed because of the flow delay.

Answer: A

Deploying Cisco Voice over IP Solutions; Davidson; Cisco Press p42

QUESTION NO: 87

A newly appointed TestKing trainee wants to know what protocol that H.255 utilizes a scaled-down version of is also used to set up the connection between two H.323 endpoints.

What will your reply be?

- A. SS7
- B. Q.921
- C. Q.931
- D. H.323
- E. H.245

Answer: C

QUESTION NO: 88

Leading the way in IT testing and certification tools, www.testking.com

You are a network administrator at TestKing. Your newly appointed TestKing trainee wants to know what Network Management Server (NMS) application she can use to monitor Voice quality by polling the SNMP MIB for MQC.

What will your reply be?

- A. Voice Health Monitor
- B. Quality of Service Policy Manager
- C. Internetwork Performance Monitor
- D. Resource Manager Essentials
- E. None of the above

Answer: B

QUESTION NO: 89

Which of the following can generate 100 Erlangs during the busy hour? (Choose all that apply.)

- A. 1 call per hour averaging 100 minutes.
- B. 2000 calls per hour averaging 3 minutes each.
- C. 3000 calls per hour averaging 2 minutes each.
- D. 3000 calls per hour averaging 3 minutes each.
- E. None of the above.

Answer: B, C

QUESTION NO: 90

You are the network administrator at TestKing. TestKing has a Cisco IPCC deployment environment. CallManager is the routing client.

In the TestKing network, perform what function will the ICM upon the receiving a call? (Choose all that apply.)

- A. ICM plays pre-recorded announcements for callers waiting in queue if no agents are available.
- B. ICM plays music for callers waiting in queue if no agents are available.
- C. ICM Identifies and selects an available agent and determines the label to be returned to the routing client.
- D. ICM maps the Dialed Number to a call type and then maps the call type to a routing script.
- E. None of the above.

Answer: C, D.

QUESTION NO: 91

What is the sampling rate used by PCM as specified by Nyquist?

- A. 800 per second
- B. 1600 per second
- C. 4000 per second
- D. 8000 per second

Answer: D

Cisco Voice over Frame Relay, ATM & IP; McQuerry; Cisco Press p57

QUESTION NO: 92

You are a network administrator at TestKing. TestKing has a router that is connected to a PBX via a 4 wire E&M circuit. All the calls to the trunk are failing. You suspect that the PBX is not receiving the incoming calls on the trunk. To determine if this is the case, you want PBX to generate a dialtone when it receives an incoming call.

Which of the following will cause the PBX to generate dialtone?

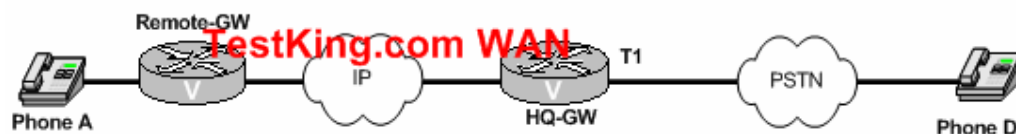
- A. Short the E pin to the Tip pin.
- B. Short the E pin to the ground.
- C. Short the M pin to the ground.
- D. Short the M pin to the Ring pin.
- E. Short the Tip pin to the Ring pin.

Answer: B

Cisco Voice over Frame Relay, ATM & IP; McQuerry; Cisco Press p43

QUESTION NO: 93

You are the network administrator at TestKing. The TestKing network is shown in the following exhibit:



A TestKing user located at phone A dials 9592215. The GWs the TestKing network are configured as follows:

Leading the way in IT testing and certification tools, www.testking.com

REMOTE-GW

```
voice translation-profile TESTKING_1
translate called 1
voice translation-rule 1
rule 1 /'\(555\) + \(.+\)//444\2/ type any national any isdn
dial-peer voice 1 voip
translation-profile outgoing TESTKING_1
session target ipv4.x.x.x.x
Port 0/0
```

HQ-GW

```
Interface FastEthernet0
Ip Address x.x.x.x y.y.y.0
voice translation-profile TESTKING_2
translate called 1
voice translation-rule 1
rule 1 /'\(12\) + \(.+\)//911\2/type national unknown plan unknown isdn
dial-peer voice 1 pots
translation-profile outgoing TESTKING_2
Port 1/0:23
```

**The call routing is working properly through the IP Network.
What digit string will be sent to the PSTN for termination?**

- A. 55514442
- B. 4445952215
- C. 5952215444
- D. 5952215
- E. 555911911444
- F. 911911444555

Answer: D

QUESTION NO: 94

Which of the following tasks can the Cisco SIP Proxy not perform?

- A. Registrar Server.
- B. Redirect Server.
- C. Proxy Server.
- D. User Agent.

Answer: D

QUESTION NO: 95

With regard to Analog DID connections to the PSTN, which of the following statements about are true?

- A. DID trunks can only send calls from the CO.
- B. DNIS information is send out-of-band.
- C. DID trunks can only send calls towards the CO.
- D. DNIS information is send in-band.

Answer: A, D

QUESTION NO: 96

With regard to jitter, which of the following statements are true?

- A. Jitter is the variation from the time that a packet is expected to be received and when it is actually received.
Voice devices have to compensate for jitter by setting up a playout buffer to accept voice in a smooth fashion and avoid discontinuity in the voice stream.
- B. Jitter is the actual delay from the time that a packet is expected to be transmitted and when it actually is transmitted.
Voice devices have to compensate for jitter by setting up a playin buffer to play back voice in a smooth fashion and avoid discontinuity in the voice stream.
- C. Jitter is the actual delay from the time that a packet is expected to be transmitted and when it actually is transmitted.
Voice devices have to compensate for jitter by setting up a playout buffer to play back voice in a smooth fashion and avoid discontinuity in the voice stream.
- D. Jitter is the variation from the time that a packet is expected to be received and when it is actually received.
Voice devices have to compensate for jitter by setting up a playin buffer to accept voice in a smooth fashion and avoid discontinuity in the voice stream.

Answer: A

QUESTION NO: 97

On which criteria does a Cisco SIP Proxy Server use to make routing decisions?

- A. From: header
- B. To: header
- C. SDP parameters
- D. User-Portion on the Request –URI

Answer: D

Leading the way in IT testing and certification tools, www.testking.com

QUESTION NO: 98

What is the purpose of the Erlang-C Traffic Model in an IP Contact Center deployment?

- A. To provision ports on an IP-IVR interfacing with Cisco CallManager.
- B. To provision agents initiating/handling the outband calls only.
- C. To provision agents receiving/handling the inbound calls.
- D. To provision ports on a voice gateway interfacing to the PSTN.

Answer: C

According the website <http://www.erlang.com/whatis.html> , the source given by Cisco as a study resource, the Erlang C is used for Call Center Agent staffing / queuing.

QUESTION NO: 99

You are a telephony trainee at TestKing Inc. Your instructor asks you what industry-standard protocol the CallManager uses for Integration to VoiceMail systems.

What will your reply be?

- A. T1-CAS
- B. H.323
- C. SMDI
- D. Q.931
- E. H.225.

Answer: C

QUESTION NO: 100

What is the range of UDP port numbers used in Cisco's VoIP implementation?

- A. 1699 to 3210
- B. 1100 to 2100
- C. 1225 to 2245
- D. 16384 to 32767
- E. 32769 to 64535

Answer: D

QUESTION NO: 101

Supplementary Services in ISDN for Echo. (Select two.)

- A.) G.711
- B.) H.323
- C.) G.165
- D.) G.174
- E.) G.168

Answer: C, E

The echo canceller complies with ITU-T standards G.164, G.165, and G.168.

QUESTION NO: 102

**Queuing technology in Voice Configurations at the edge gateway (design guide)
Voice (RTP-Traffic), Signaling and normal data traffic.**

- A.) PQ, CBWFQ, FQ
- B.) LLQ, CBWFQ, WFQ
- C.) LLQ, CBWFQ, FQ
- D.) PQ, WFQ, FQ

Answer: C

QUESTION NO: 103

Exhibit:

phone -> gw -> fr -> atm -> gw -> phone

ATM to FR and Back over WAN for Voice-Transfer (FR <-> ATM). (Select two.)

- A.) FRF.8
- B.) FRF.11
- C.) FRF.12
- D.) FRF.15
- E.) FRF.16

Answer: A, B

Two possible answers. I did [A,B]

QUESTION NO: 104

Leading the way in IT testing and certification tools, www.testking.com

Transfer types from AMIS to Email-server.

- A.) Email-Message
- B.) Email-Message and Voice-Mail-Message
- C.) Voice-Mail-Message
- D.) ?

Answer: C

QUESTION NO: 105

There are 100 calls with duration of 6 minutes in busy hour time.

- A.) 100 Erlang
- B.) 10 Erlang
- C.) 3600 CCS, Centum Call Seconds
- D.) B and C

Answer: A

QUESTION NO: 106

When the CallManager goes down, what will the PBX do?

- A.) Normal telephony will work
- B.) There will nothing work
- C.) There are only some problems with signalling, but calls will be forwarded
- D.) ?

Answer: Pending